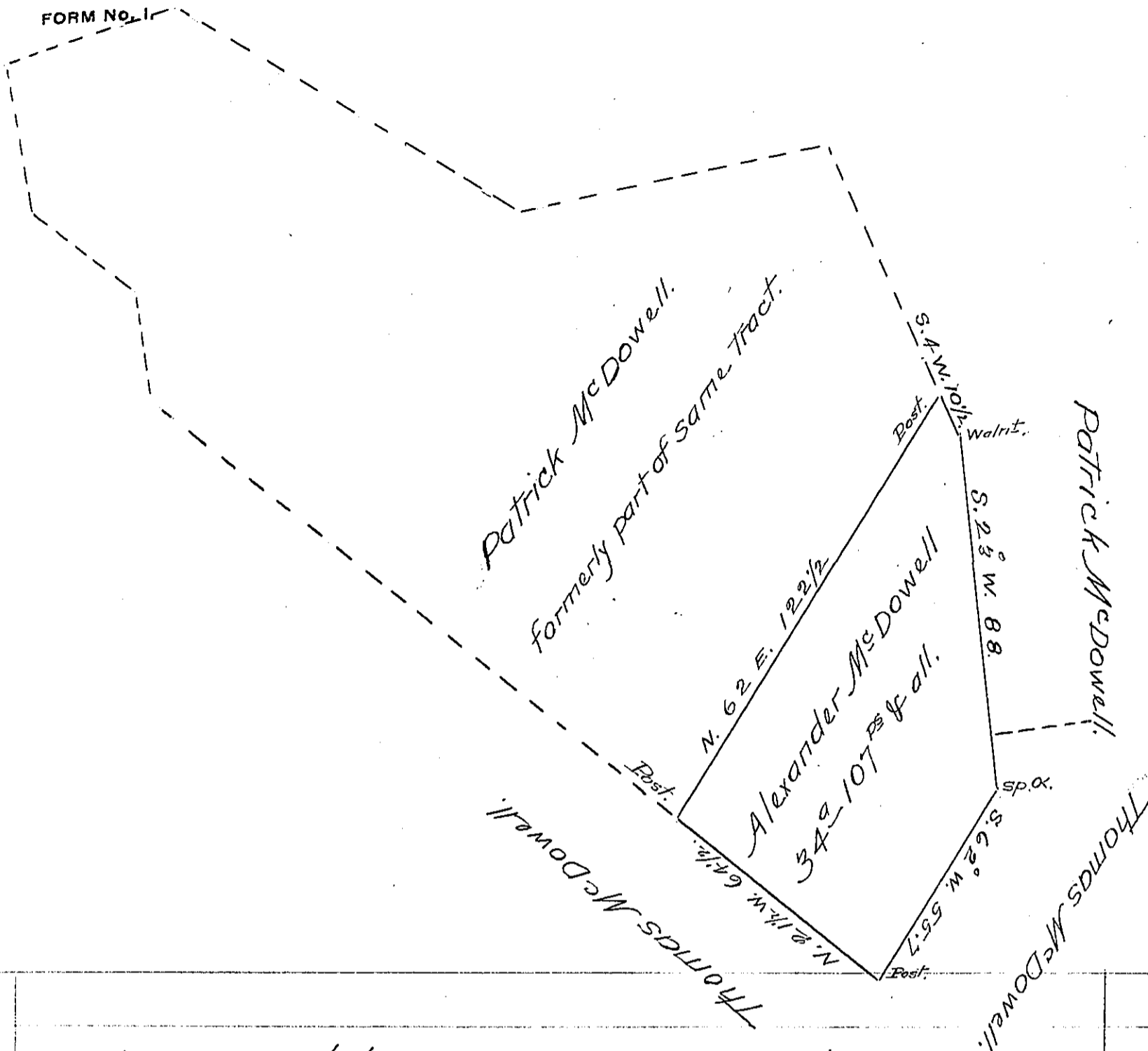


FORM NO. 1



A Draught of a tract of land situate in Peters Township Franklin County (formerly Cumberland County) containing thirty four acres one hundred and seven perches and allowance of six per Cent for Roads &c., being part of a larger tract of 169 1/4 acres & allce. Surveyed 16<sup>th</sup> March 1769 on an Order of Survey granted Francis Waddle Dated June 9<sup>th</sup> 1767 No 3833 — Surveyed and divided of the above part for Alex<sup>r</sup>. McDowell the 8<sup>th</sup> day of February 1839

To John Taylor Esquire }  
 Surveyor General of Penna. } Sam<sup>l</sup>. M. Armstrong D.S.

IN TESTIMONY that the above is a copy of the original remaining on file in the Department of Internal Affairs of Pennsylvania, made conformably to an Act of Assembly approved the 16th day of February, 1833, I have hereunto set my Hand and caused the Seal of said Department to be affixed at Harrisburg, this Sixteenth day of February 1906.

*Isaac R. Brown*  
 Secretary of Internal Affairs.